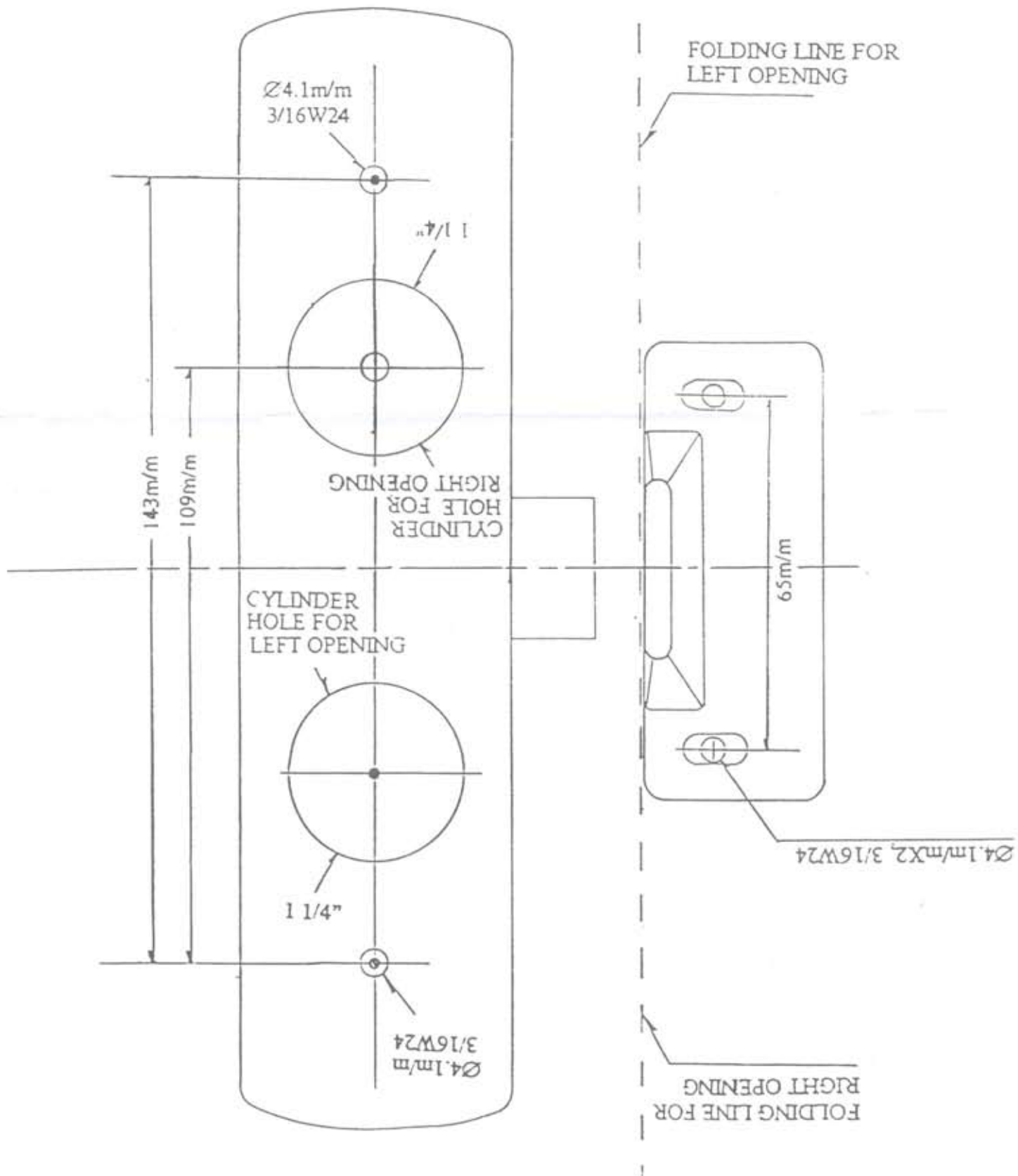


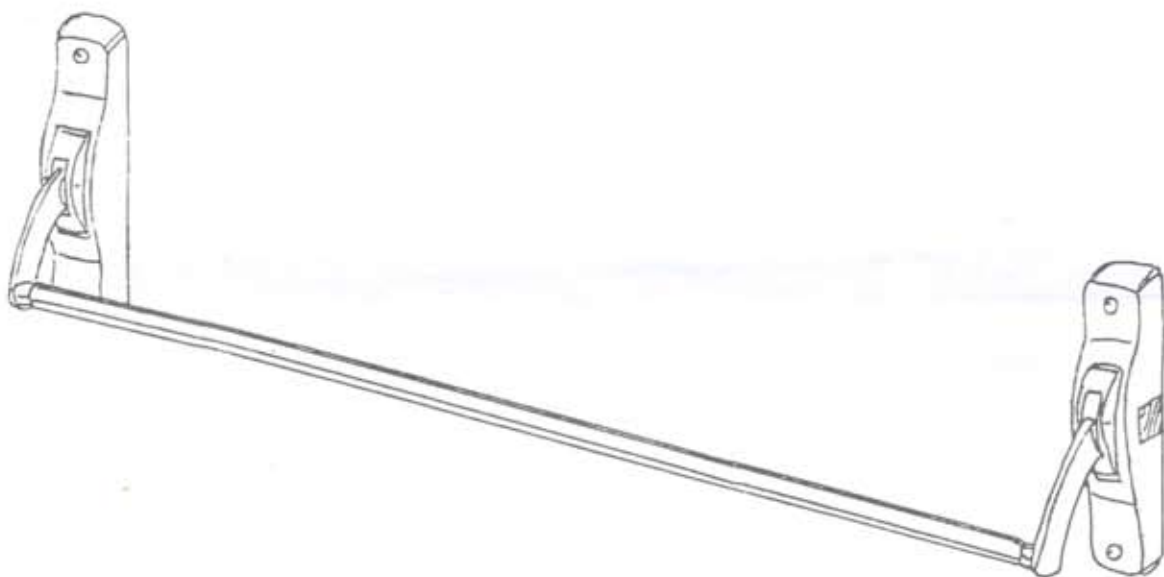
TEMPLATE FOR LEFT OPENING

TEMPLATE FOR RIGHT OPENING



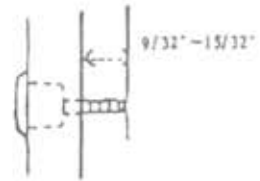
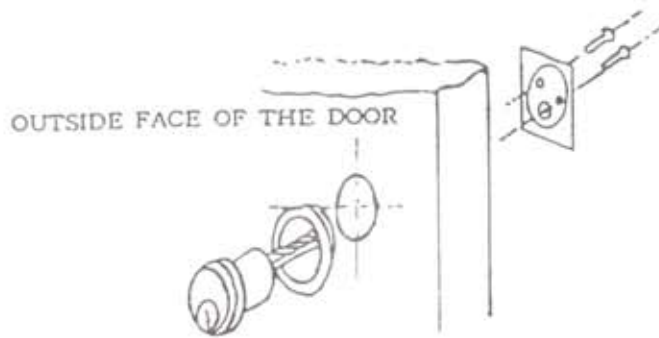
# NOTICE

TO EXTEND THE LIFE OF THIS PANIC DEVICE,  
LOCK THE LATCH AS RETRACTED BY TURNING  
THE BUTTON WHEN DOOR IS IN CONTINUOUS  
ACTIVITY.



**D** INSTALL KEY CYLINDER

1. INSERT THE CYLINDER INTO THE HOLE ON THE DOOR
2. KEEP THE TAILPIECE HORIZONTAL
3. TIGHTEN THE SCREWS

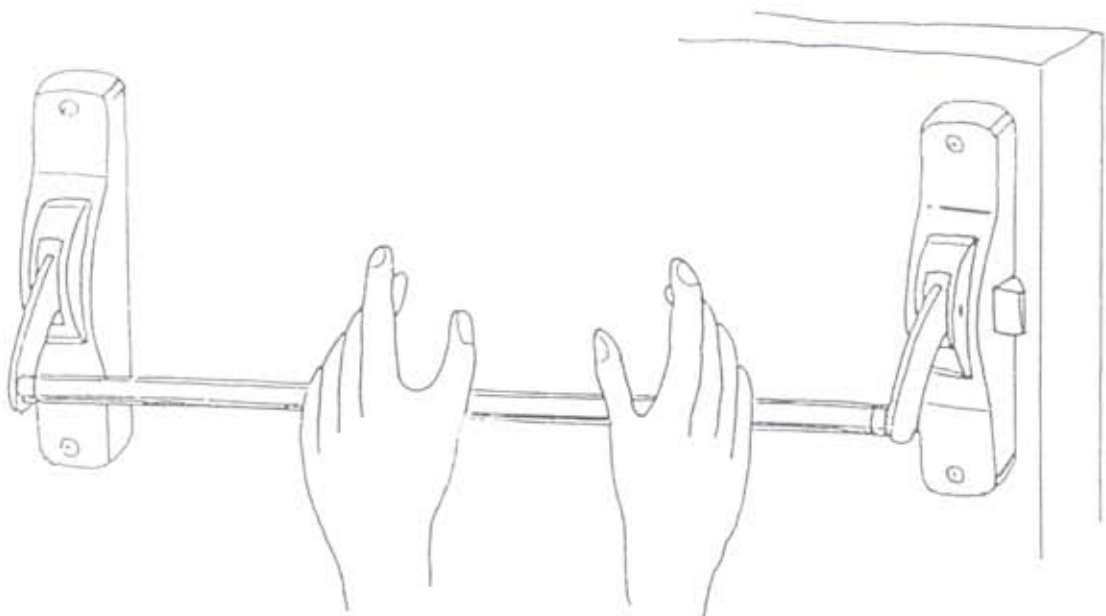


TAILPIECE PROJECTION

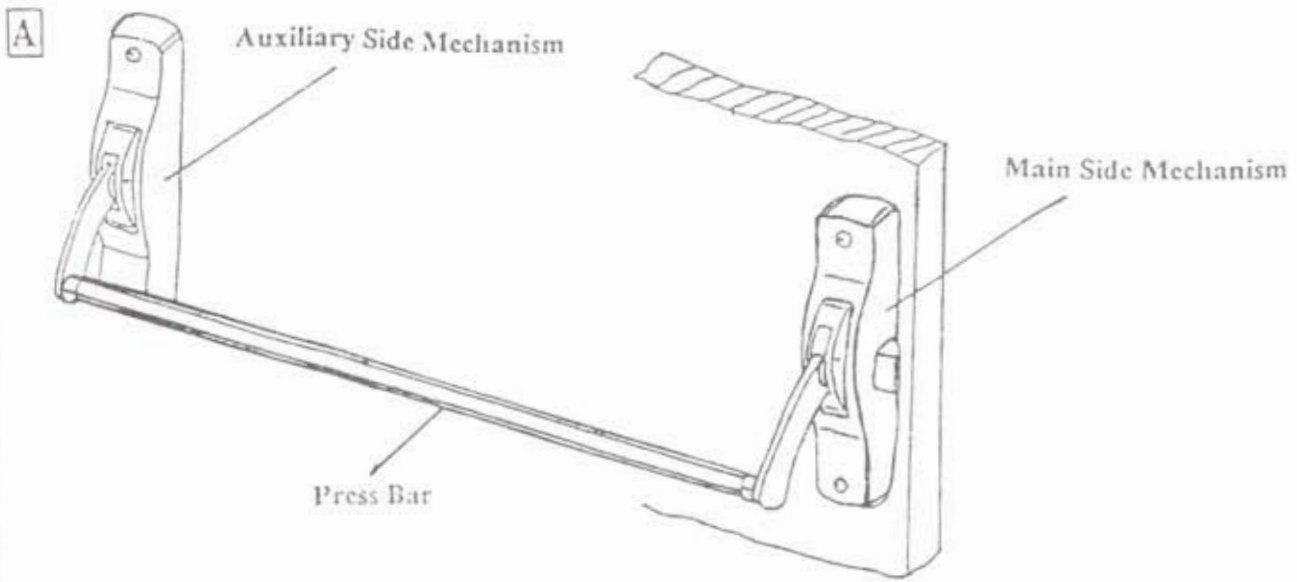
**E** INSTALL BODY



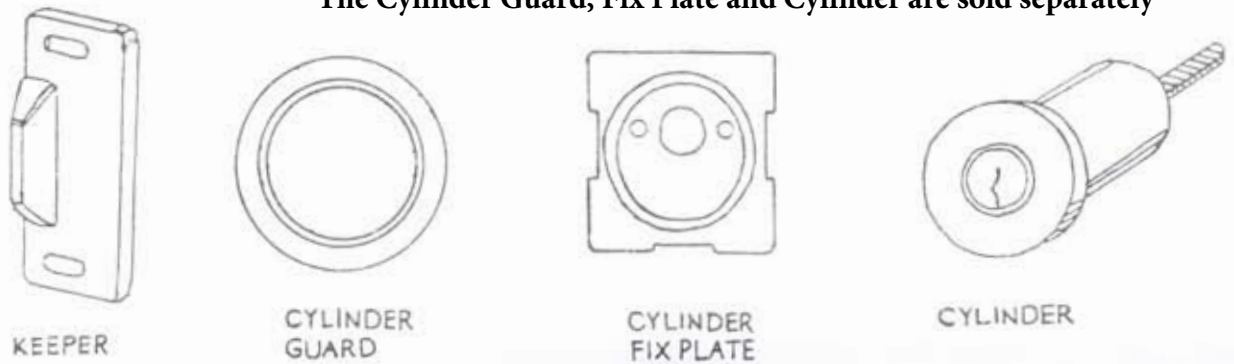
**F** OPERATION TEST



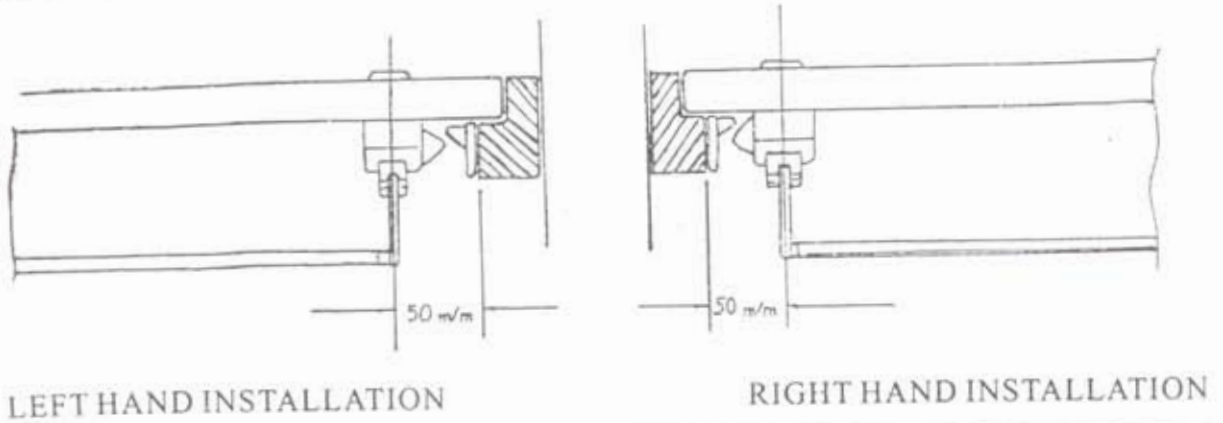
TEST PUSH BAR



**\*The Cylinder Guard, Fix Plate and Cylinder are sold separately\***



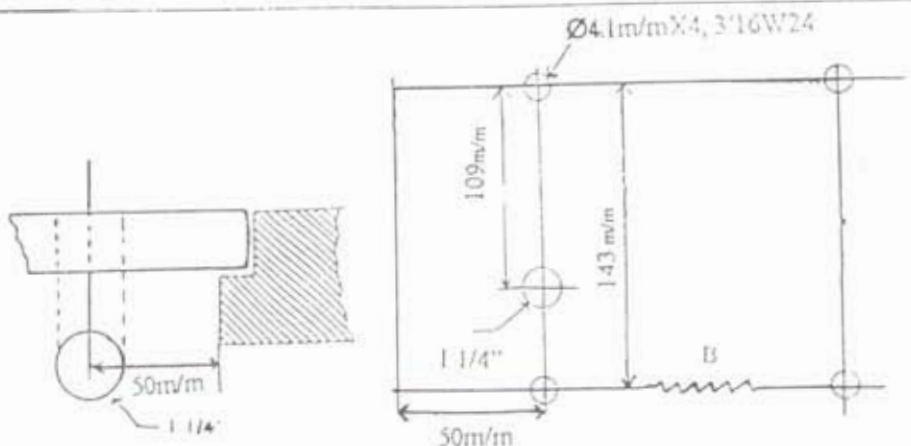
**B TYPE OF INSTALLATION**



**C DRILL HOLES**

1 USE TEMPLATE ENCLOSED TO MARK DOOR FACE AND DRILL HOLES IN ACCORDANCE WITH THE DIAMETERS SUGGESTED

2 'B' LENGTH SHOULD BE MEASURED FROM THE CENTER OF CYLINDER HOLE TO THE END OF THE BODY



OUTSIDE FACE OF THE DOOR

INSIDE FACE OF THE DOOR