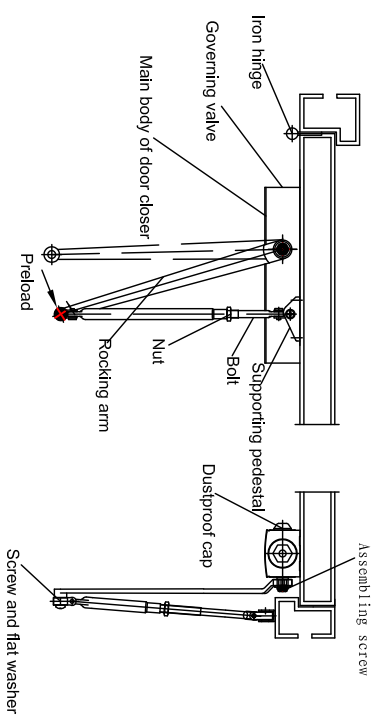
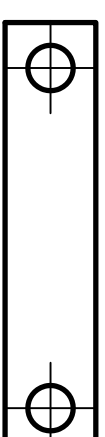


Vertical installing inside the door

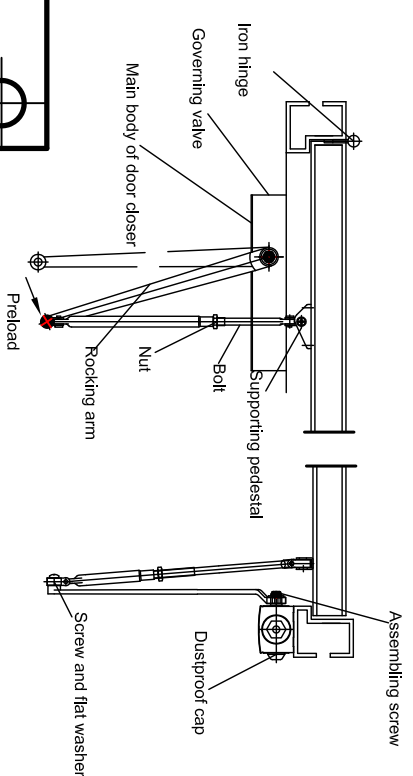


I. Steps of door vertical installation inside or outside the door.

1. According to the needs of door installation of inside or outside, please cut the corresponding installation template and affix it on the door and the doorframe respectively, then drill the mount hole by electric drill.
2. To install main body of door closer on the door or doorframe through the drilled mount hole, and to fix it tightly while governing valve must be direct to hinge.
3. To unfix the washers and serews from the rocker-arm and bolt, and install the supporting pedestal of bolt on the corresponding door or doorframe, and fix it tightly with serews.
4. To assemble plumb the rocker-arm on the tenon of the gear shaft, and fix it tightly by assembling screws.
5. To preload the rocker-arm to a certain degree rotation, then assemble it with the bolt which plumb to the door and fix it tightly by flat washer and serews (The length of the blot can be adjusted, then to tighten the nut of the bolt).
6. To cover the dustproof cap on the other side of the gear shaft.



Vertical installing outside the door

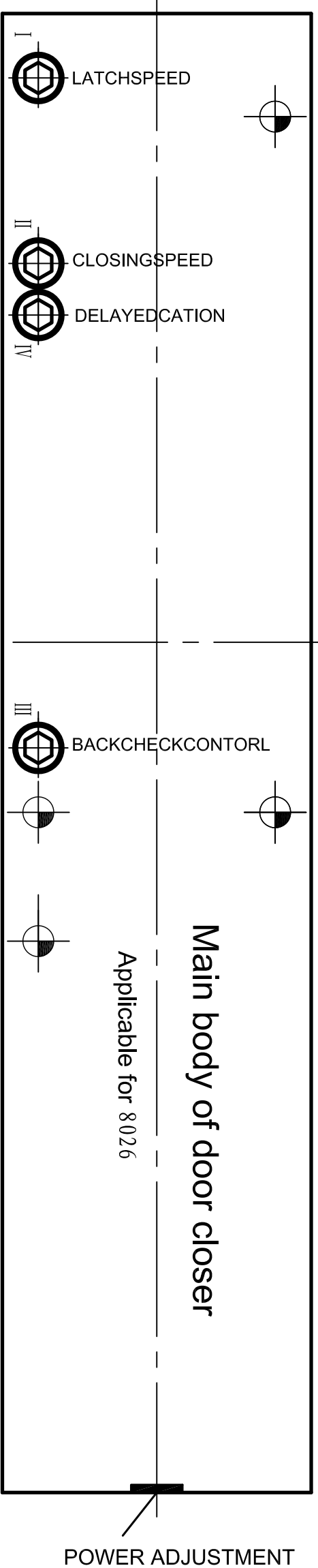


Doorframe

Standard installation:

To install the template inside the right door while to install the template inside the left door perpendicularly and symmetrically.

Door 8026

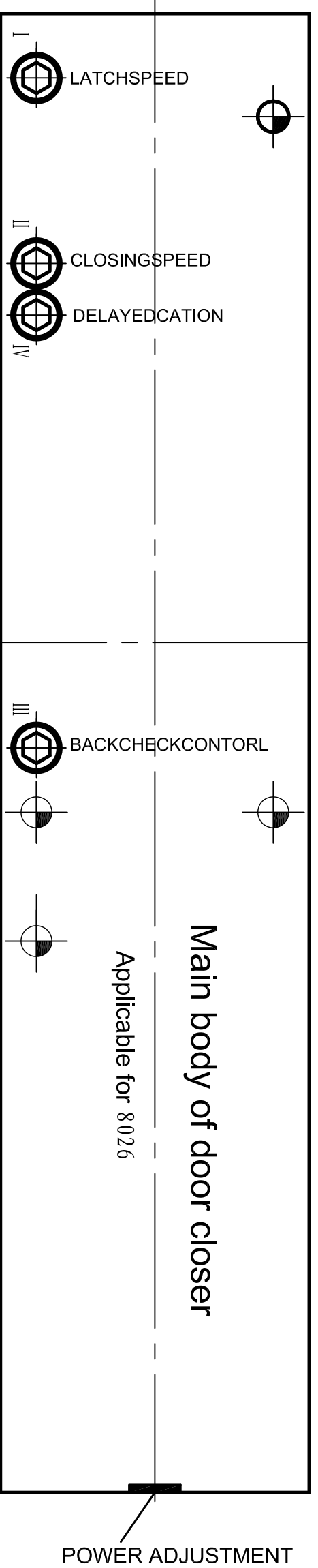


Doorframe

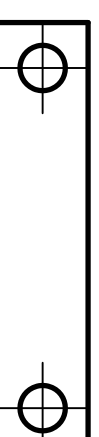
Door

Reverse installation:

To install the template outside the right door while to install the template outside the left door and symmetrically.

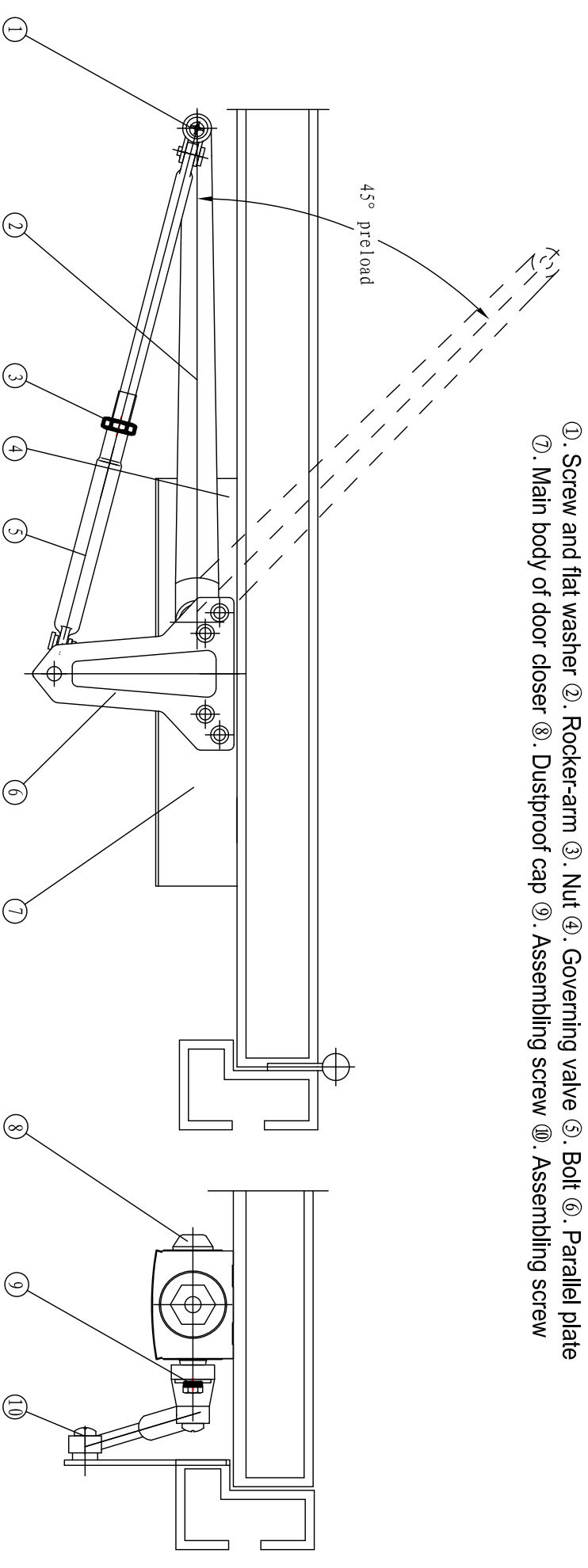


Iron hinge



II. Steps of door parallel installation outside the door.

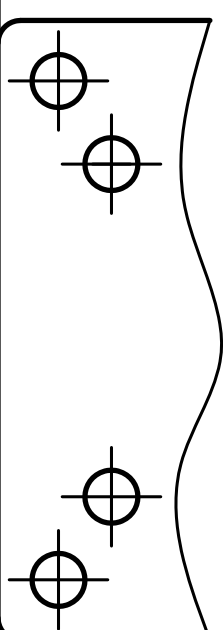
1. Please fold the template of parallel template to 90° according to the folding line and affix it on the door and doorframe respectively, then drill the mount hole by electric drill.
2. To install the main body of door closer on the door or doorframe through the drilled mount hole, and to fix it tightly while governing valve must be direct to the direction of door opened.
3. To install the shaft of parallel plate on the doorframe and the shaft must be direct to outside the door , then fix tightly.
4. To set the jacket of the bolt on the shaft of parallel plate after unfixing the supporting pedestal and shaft then to fix it tightly by assembling screws.
5. To install the rocker-arm on the tenon of the gear shaft meanwhile inking to 45° angle upward the doorframe.
6. To make the rocker-arm parallel with the main body of door closer by preload the rocker-arm to 45° angle along the direction of door . To adjust the length of the bolt and set the jacket on the shaft of rocker-arm, fixing it tightly by flat washer and screws then tightening up the nut of the bolt.
7. To cover the dustproof cap on the other side of the gear shaft.



- ①. Screw and flat washer
- ②. Rocker-arm
- ③. Nut
- ④. Governing valve
- ⑤. Bolt
- ⑥. Parallel plate
- ⑦. Main body of door closer
- ⑧. Dustproof cap
- ⑨. Assembling screw
- ⑩. Assembling screw

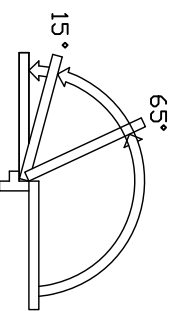
Parallel installation:

To install the template outside the left door parallelly while to install the template outside the right door parallelly and symmetricaly.

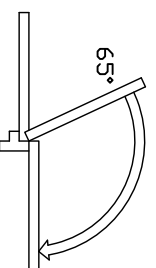


III. Speed adjustment of the door closer

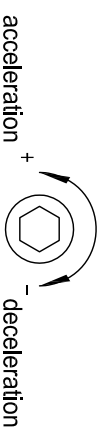
1. "I" is the lockup governing valve. "II" is the shutdown governing valve. "III" is the buffer governing valve. "IV" is the delaying time governing valve. When the governing valve counter-clockwise rotates, the speed is acceleration; when the governing valve clockwise rotates, the speed is deceleration.
2. Open the door signal of shutdown and lockup function.



- 180° ~ 65° for delay function effect.
- 65° ~ 15° for shutdown function effect.
- 15° ~ 0° for lockup effect.



Beginning to buffer at 65° until 180°



V. Notice item

1. The door closer has automatic closing function, so forbid to close the door forcibly.
2. After have been used for half month each screw must be tighten up once. If the assembling screw of rocker-arm is loose it must be tighten up.
3. Please note the adjustment of speed in the summer and winter yearly.

IV. Power adjustment

1. Rotate to the end of counter-clockwise of power adjustment , which is matched to the smallest size.
2. Rotate to the end of clockwise of power adjustment , which is matched to the biggest size.

