



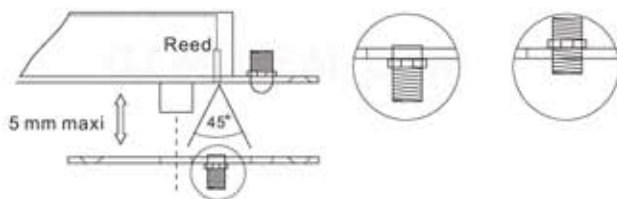
EB-260 electric dropbolt incorporates with mechanical cylinder to lock or unlock the door manually in case of an unexpected power failure.

Specifications

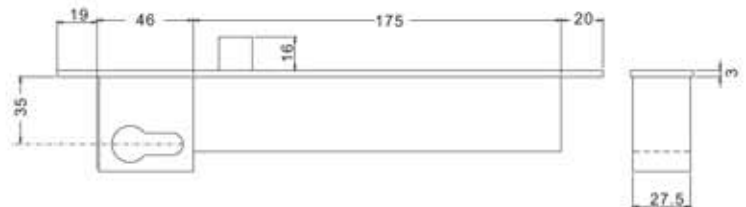
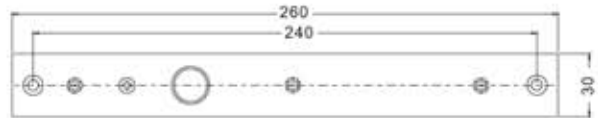
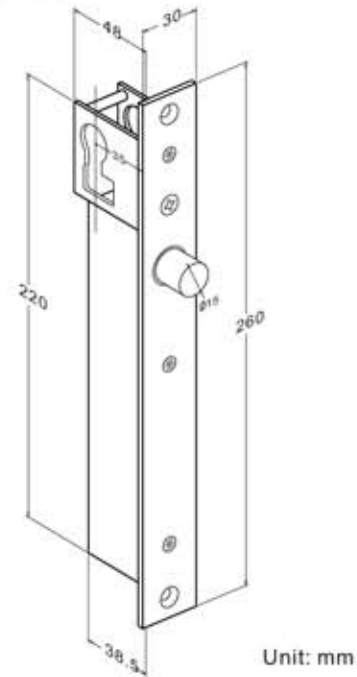
- Fail-Secure Version (Power to Unlock)
- Power Input: 12~28 V DC
- Voltage Tolerance: $\pm 10\%$
- Current Draw:
Pull in: 1.0A, Holding: 0.3A@12V DC
(at temperature 20°C)
- Operating Temperature: -10~+45°C
- Humidity: 0~95% non-condensing.
- Lock's surface Temperature (when the power is on):
<current temperature +20°C
- Tested to 500000 cycles.
- Face Plate Material: stainless steel
- Auto-relocking Time Delay : 3, 8 , 15 , 25 seconds
- Weight: 1.3 Kg

Adjustable Sensor

The strike plate sensor magnet can adjusted to improve sensor accuracy, which can provide up to range of 5 mm wide door gap.



Dimension

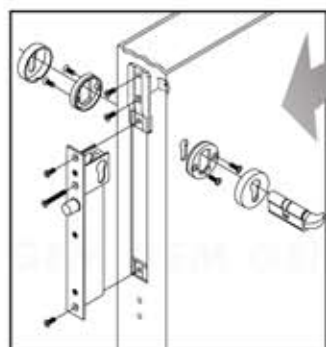
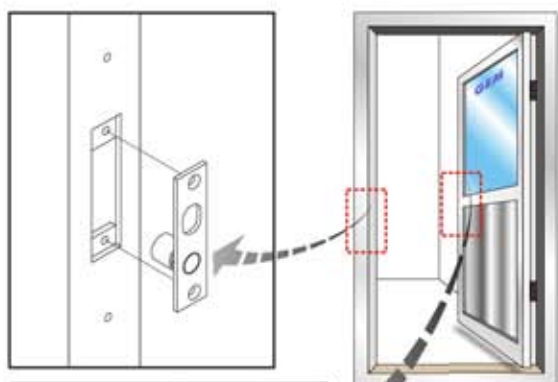


Solid Bolt for Superior Strength

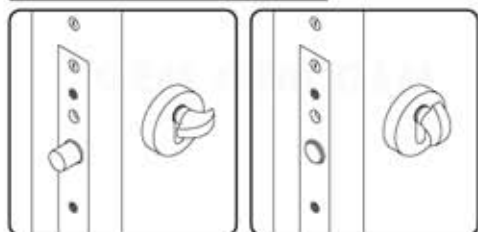
13.5mm diameter (16mm bolt throw) solid stainless steel bolt with hardened magnet core provided greater security. The bolt also rotates freely, making attempts to tamper or cut extremely difficult.

Door Leaf Flush Installation

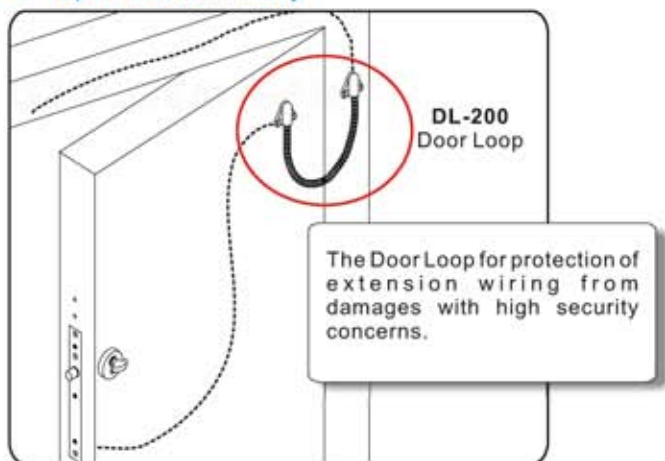
It can also be install vertically or horizontally.



Cylinder operates by thumb turn indoor or use key from outdoor.



Optional Accessory

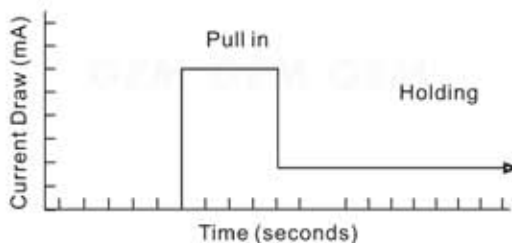


Long Life Solenoids

Special designed solenoid for strength and long life operating lifetime with guaranteed 500,000 operations.

Energy Saving Design

When the bolt is extended to keep the door locked, it draws only 0.3A in a holding mode down from 0.9A while the bolt is retracted. This design both protects the power supply and extends the life of the electric dropbolt.



12 to 28V DC self-regulating

The Electric Dropbolt offers 12 to 28 VDC input voltage with self regulating feature.

Lock Delay Settings

Door locking time delay 3 to 25 seconds adjustable by jumper PINs.



Warranty

The product is warranted against defects in material and workmanship while used in normal service for a period of 1 year from the date of sale to the original customer. The GEM policy is one of continual development and improvement; therefore GEM reserves the right to change specifications without notice.