



600 Eleventh Street NW
Grand Rapids, MI 49504
Phone: (800) 888-9768 (616) 235-0140
Fax: (616) 235-2901 Email: info@dacindustries.com
www.dacindustries.com

Part #6035 & #6037 Standard Exit Bar Kit Installation Guide

Materials Included:

- 1 - Mounting Plate - 2 pieces; inner and outer plate
- 12 - tek-screws, stainless steel
- 1 - Detex exit bar
- 1 - receiver plate and strike
- 1 - 3/8" U-bolt, stainless steel
- 2 - flat washers
- 2 - cap nuts, stainless steel
- 5 - 1/4" nylon lock nuts, stainless steel
- 3 - 1/4" X 3/4" machine screws, stainless steel

Tools Recommended:

- Hammer
- Center Punch
- Electric Drill with 3/8" Socket
- Magnetic Torpedo Level
- Adjustable Wrench
- Combination Screw Driver

Determine gate width allowing approximately 1" for the latch side of the gate plus an allowance for the gate hinges you are using. **Be sure to include a horizontal brace in the area of the mounting plate.** Ornamental gates should not need horizontal bracing.

Build and stretch gate. Install back plate subassembly using the two outer holes and the six 1/4" X 3/4" machine screws with locknuts. Depress pushpad and install exit bar on backplate subassembly; also install the two 1/4" X 1/4" screws into subassembly. (Hint - drilling pilot hole first into thick wall pipe will make it easier to install tek-screws.) If the exit bar is too wide to fit the gate, cut end of bar to make shorter.

Exit bar head needs to be installed 2 1/4" from edge of plate and approximately 10" from the bottom of the plate. Location of exit bar will

determine if machine screws or tek-screw will be used to attach to mounting plate. Exit bar height is approx. 40 - 42" to floor. **Check your local code for specific requirements.**

Install strike latch onto receiver using the two ¼" x ¾" screws provided. After mounting plate and exit bar are installed on gate, install receiver bracket on latch post by using u-bolt with flat washer and cap nuts. Adjust so that exit bar latch hits the strike and that the dead latch hits outside the catch area. Check for smooth operation and secure latch bolt engagement. When in proper location, install two tek-screws through receiver and into post.

- **The installation of a transom over the gate for added stability is recommended.**

8/5/09

Part # 6035-6037 Detex Kit No Lock Box



Install mounting plate to inside of gate by using six tek-screws.



Install subassembly onto mounting plate using **outside** holes for screws. Subassembly should be 2 1/2" from edge of plate.



Depress push pad and install exit bar on back plate subassembly.



Install cover.



Install back cover using sheet metal screws or 1/4" x 1" machine screw with nut.



Adjust so that exit bar latch hits strike.

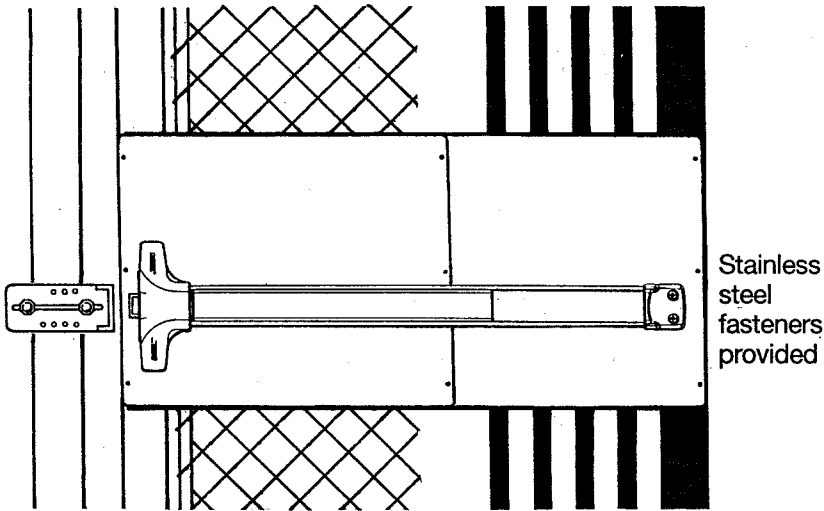


After latch bracket is adjusted properly, attach to post with tek-screws.

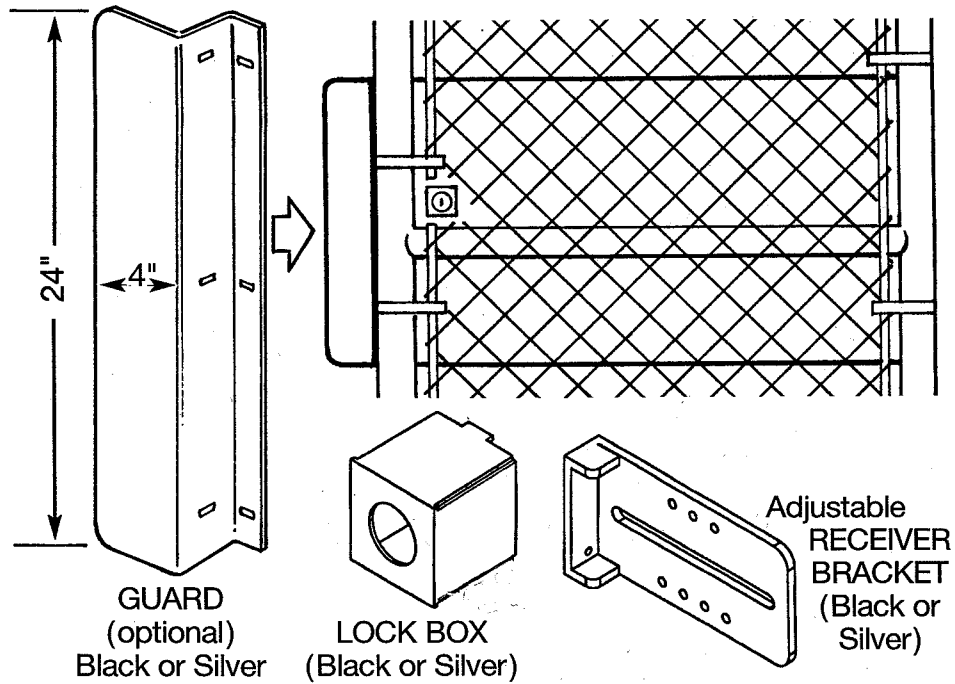
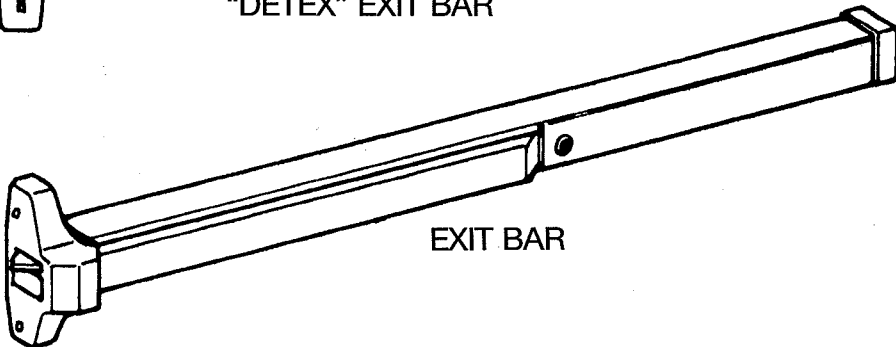
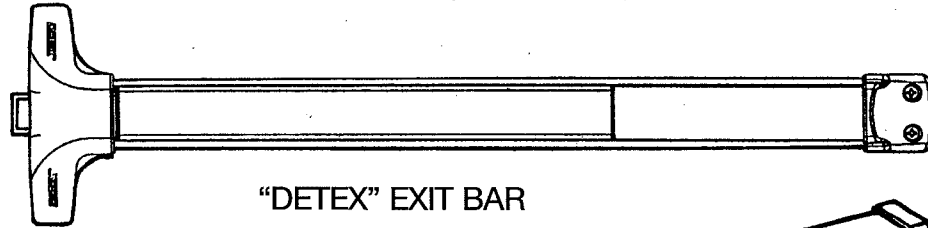
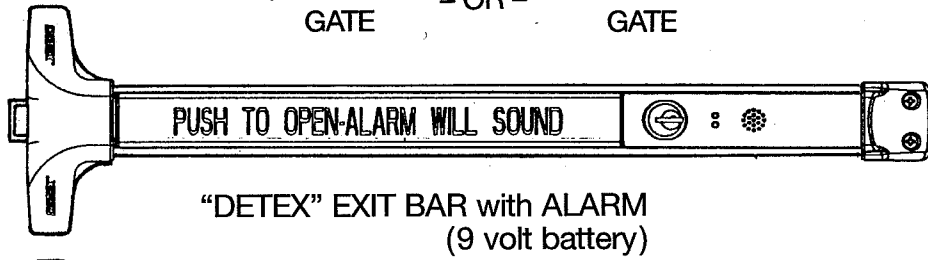
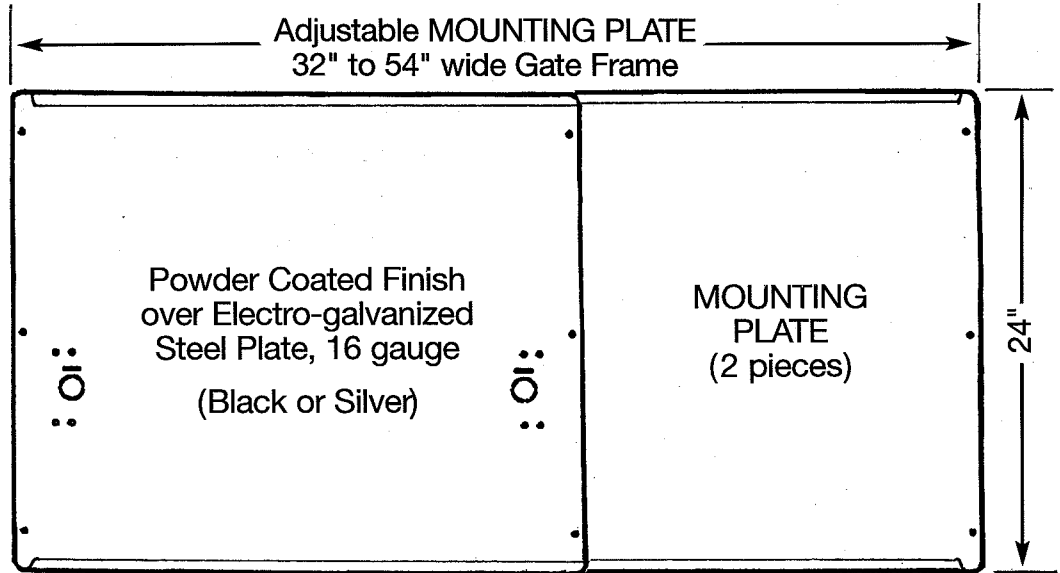



Receiver must act as a gate stop.

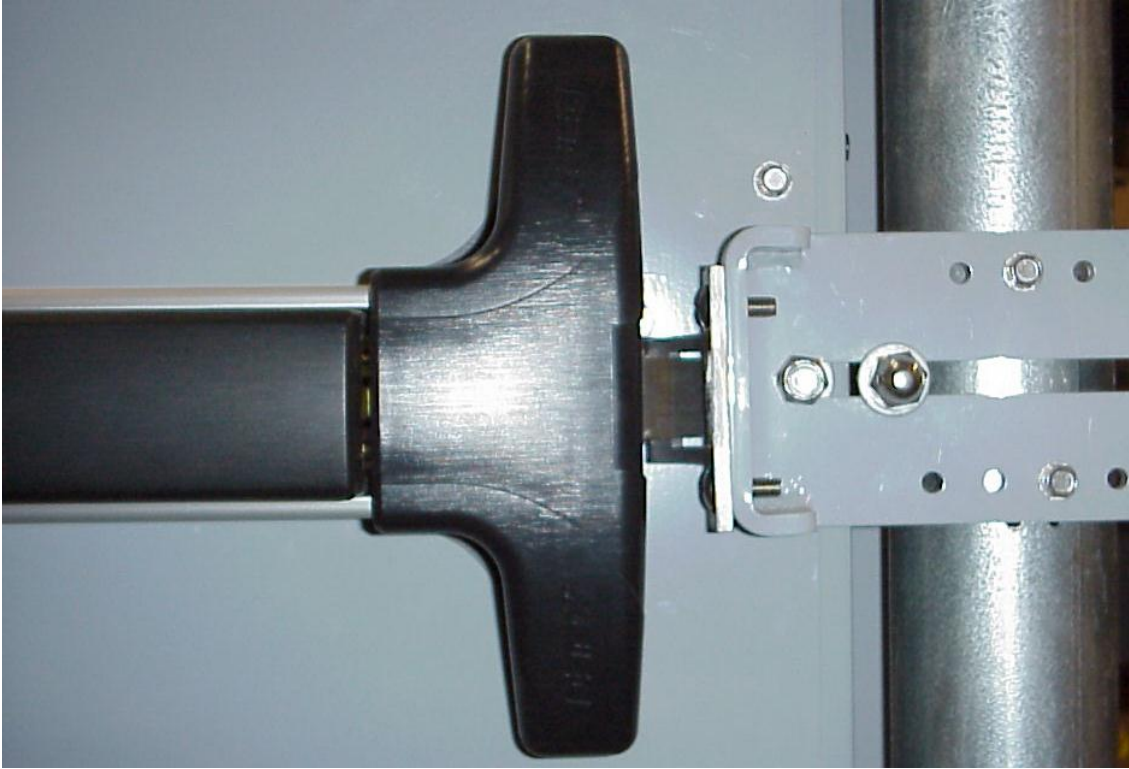
EXIT DOOR HARDWARE



CHAIN LINK GATE - OR - ORNAMENTAL GATE



EXIT DOOR HARDWARE		 1-800-888-9768 www.dacindustries.com
JOB / PROJECT	DATE	
		_____ OF _____



Receiver must act as a gate stop.



Guards are available for extra security or for gaps greater than 1" at an additional cost.

